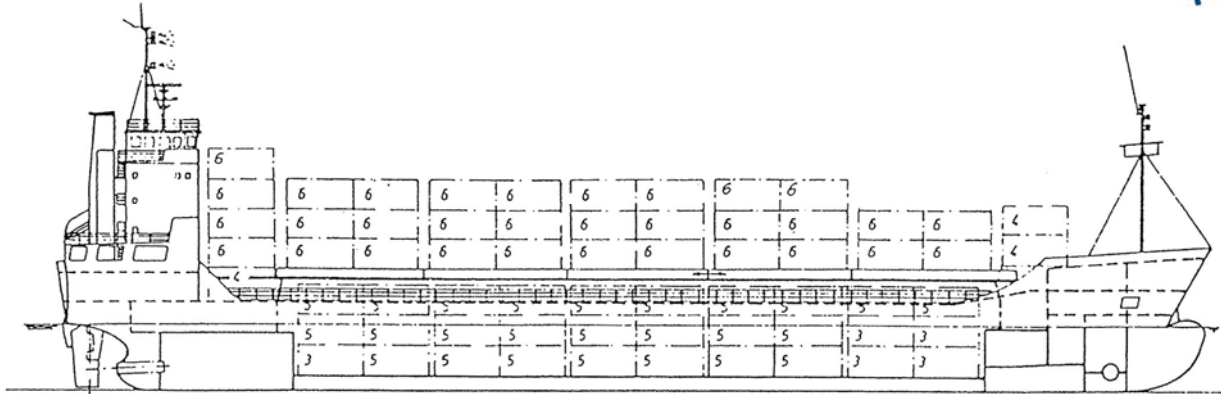


# MV "ARINA"



## Multipurpose Cargo Vessel Built 1989

class: GL + 100 A5 E3 + MC E 3 AUT, Finnish Ice Class 1A, strengthened for heavy cargo

### Main Dimensions

Length over all	104.81 m
breadth moulded	16.25 m
draught fully laden	5.78 m
deadweight all told	4,402 tdw
GT/NT	3826/2043
IMO Nr.	8806163
Flag	Lithuania

### Main Engine

Wärtsilä Vasa 8R 32D, 2,960 kW

### Auxiliaries

- 2 diesel auxiliaries of 158 kW each
- 1 shaft generator of 540 kW
- 1 bow thruster of 300 kVA

### Speed and Consumption

abt. 14,0 knots abt. 12 t/day if-180

### Tank Capacities (always about)

IFO	273 mtons
Gasoil	66 mtons
Ballast	1,963 mtons

### Holds and Hatches

- 1 hold / 1 hatches
- folding hatch covers

### Reefer Connections

34 reefer points

### Container Intake

in closed holds	<b>140 TEU</b>
<u>on deck</u>	<b><u>204 TEU</u></b>
<b>Total</b>	<b>344 TEU</b>

### Stability (always about)

230 TEU each 14 t

### Permissible Stack Weights

on deck	20' container: 40 tons/per stack
	40' container: 50 tons/per stack
hold	20' container: 72 tons/per stack
	40' container: 100 tons/per stack

All details without guarantee