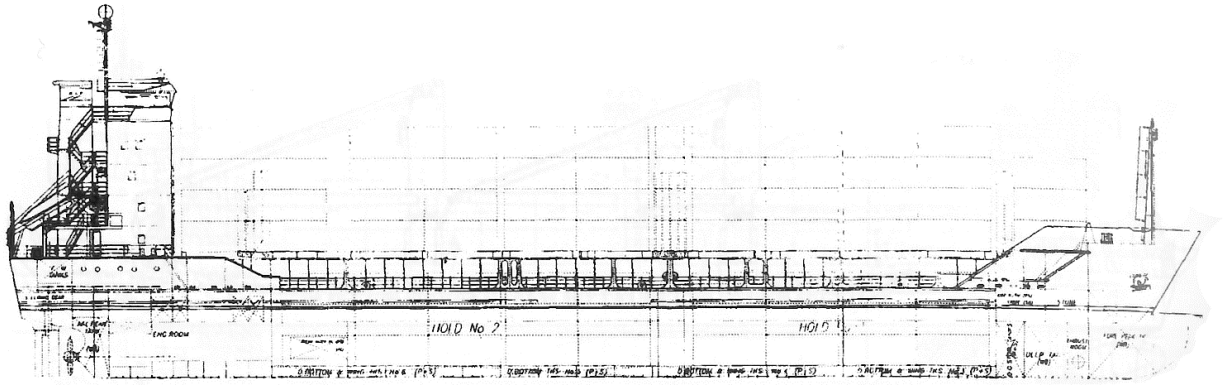


# MV "BLEXEN"



## **Gearless Mutlipurpose Containervessel Built 5/1996 by ENVC- Portugal- improved Type P.917**

class: G.L. + 100 A5 E 'equipped for carriage of containers', + MC AUT

### **Main Dimensions**

Length over all	99.98 m length
between perp.	93.97 m
beam	16.50 m
deadweight all told	abt. 4,696 dwat sfb
GT/NT	3821/ 1980
IMO Nr.	9125669
Flag	Antigua Barbuda

### **Main Engine**

MAK 8M32- 3,520 kW

### **Auxiliaries**

- 3 diesel generators of 247 kW each
- 1 shaft generator of 500 kW
- 1 bow thruster of 350 kVA

### **Speed and Consumption**

abt. 15.0 knots abt. 15.5 t/day ifo-180

### **Tank Capacities** (always about)

IFO	267 mtons
Gasoil	80 mtons
Ballast	1,770 mtons

### **Holds and Hatches**

- 2 holds / 2 hatches
- Hydraulic folding hatch covers

### **Reefer Connections**

58 reefer plugs on deck 380v/50 c.p.s./3 phases

### **Container Intake**

in holds	<b>127 TEU</b>
<u>on deck</u>	<b><u>263 TEU</u></b>
<b>Total</b>	<b>390 TEU</b>

### **Stability** (always about)

227 TEU each 14 t

### **Permissible Stack Weights**

under deck	20' container: 72 tons/per stack
	40' container: 90 tons/per stack
on deck	20' container: 40 tons/per stack
	40' container: 60 tons/per stack

All details without guarantee