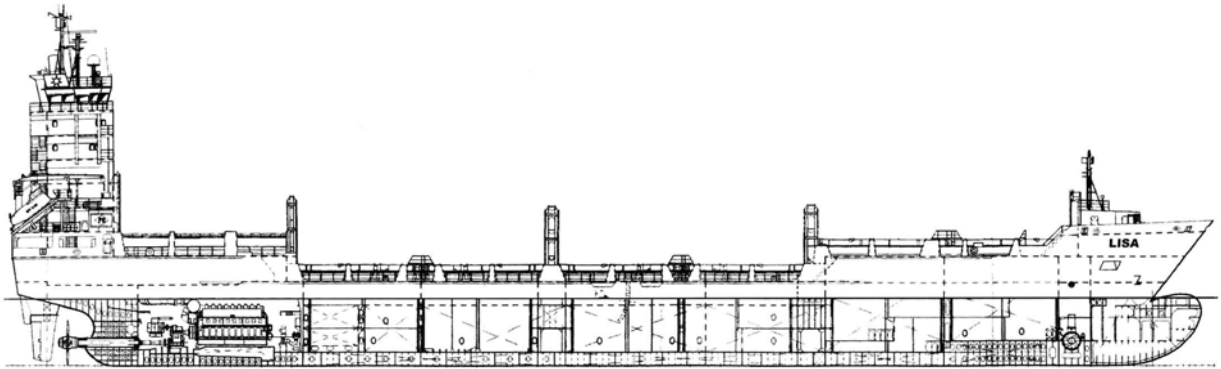


# MV "LISA"



## Cellular Container Vessel Built 2003 by Sietas, Hamburg

class: Germanischer Lloyd (+) 100 A5 E3 SOLAS II-2, Reg. 19, "Containership" + MC E3 AUT

### Main Dimensions

Length over all	137,50 m length
between perp.	126,00 m
breadth	21,30 m
moulded draught	7,48 m
deadweight all told	abt. 8,700 tdw sfb
GT/NT	7,519/ 3,570
IMO Nr.	928 77 04
Flag	United Kingdom

### Main Engine

MAK 9 M 43 – 7.950 kw

### Auxiliaries

2 diesel generators of 534 kw each  
1 shaft generator of 1.300 kw

### Speed and Consumption

abt. 18 kn/abt. 33 t/day ifo-380

### Tank Capacities (always about)

IFO 706 mtons  
Gasoil 150 mtons  
Ballast 3.735 mtons

### Holds and Hatches

4 holds / 4 hatches  
hydr. operated folding steel hatch covers

### Reefer Connections

150 reefer plugs on deck 400V/50 c.p.s./3 phases

### Container Intake

in holds	<b>226 TEU</b>
(3 resp. 4 tiers of 9'6" each)	
on hatches resp. on deck	<b>588 TEU + 4 FEU</b>
(upto 7 tiers)	
<b>Total</b>	<b>814 TEU + 4 FEU</b>

Vessel able to load 20'/40', 30', 45' - containers.

### Stability (always about)

507 TEU each 14 t

### Permissible Stack Weights

in hold 1 and 2	96 t per 20' and 96 t per 30' stack 136 t per 40' stack
in hold 3 and 4	90 t per 20' and 96 t per 30' stack 100 t per 40' stack
on hatches 1+2	50 t per 20' and 60 t per 30' stack 80 t per 40' and 45' stack
on hatches 3-4	60 t per 20' and 30' stack 90 t per 40' and 45' stack

All details without guarantee